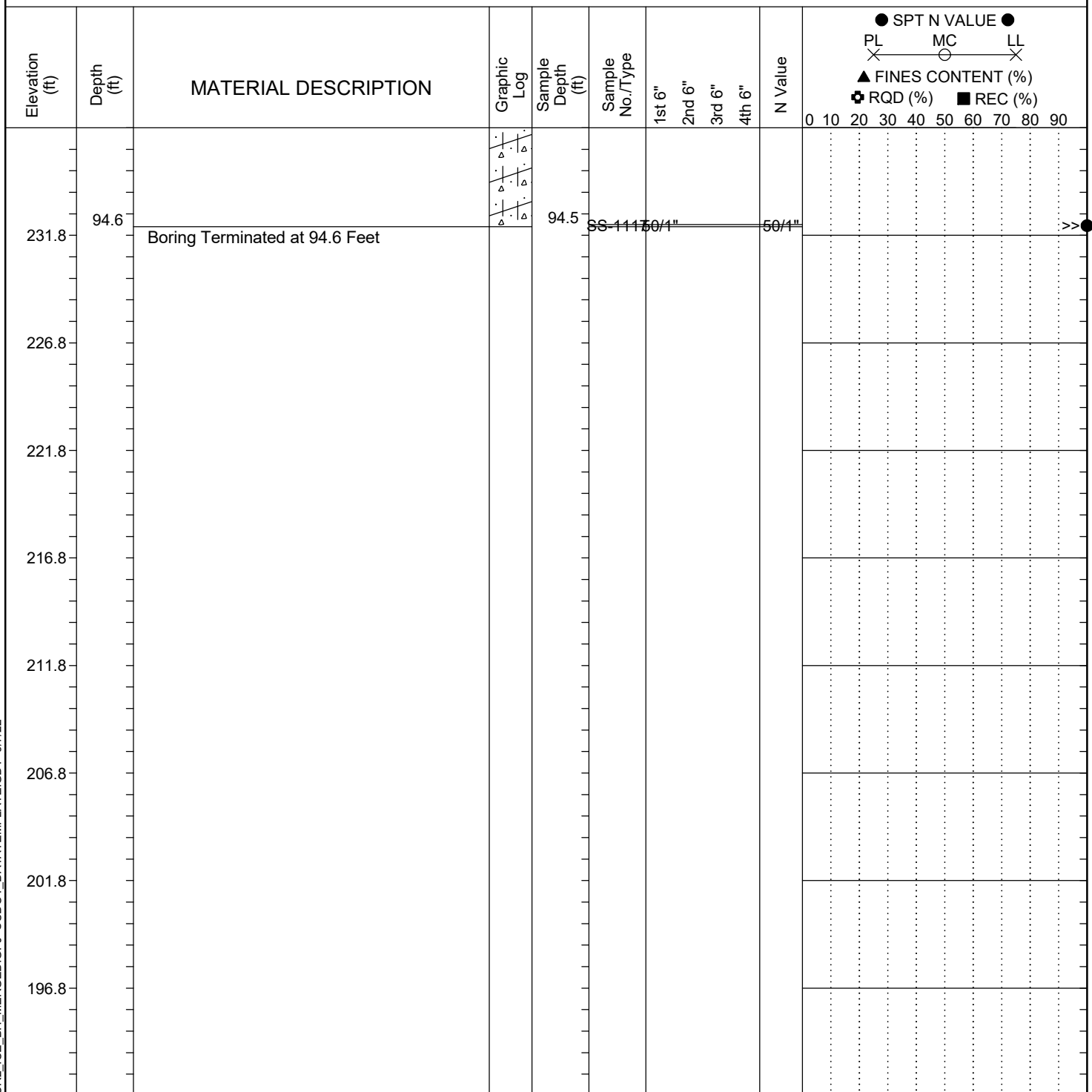


Project ID:	P039719	County:	Richland	Boring No.:	G-120
Site Description:	Carolina Crossroads Phase 2			Route:	Broad River Rd.
Eng./Geo.:	M. Akland	Boring Location:	613+00	Offset:	38 RT
Elev.:	326.8 ft	Latitude:	34.03963386	Longitude:	-81.09410131
Date Started:	3/24/2022				
Total Depth:	94.6 ft	Soil Depth:	94.6 ft	Core Depth:	N/A ft
Date Completed:	3/24/2022				
Bore Hole Diameter (in):	2.25	Sampler Configuration	Liner Required: Y (N)		Liner Used: Y (N)
Drill Machine:	D-50 #439	Drill Method:	RW	Hammer Type:	Automatic
Energy Ratio:	90.8%				
Core Size:	N/A	Driller:	P. Mattis	Groundwater:	TOB 4.3 ft
24HR	FIAD				


LEGEND

SAMPLER TYPE		DRILLING METHOD	
SS - Split Spoon	NQ - Rock Core, 1-7/8"	HSA - Hollow Stem Auger	RW - Rotary Wash
UD - Undisturbed Sample	CU - Cuttings	CFA - Continuous Flight Augers	RC - Rock Core
AWG - Rock Core, 1-1/8"	CT - Continuous Tube	DC - Driving Casing	